

A FIRST LOOK AT OUR NEW SHOW SITE FOR 2010



HAPPY HOLIDAYS FROM YOUR 2009 OFFICER TEAM!

Celebrating
Our 30th Anniversary
KEYSTONE RECORD COLLECTORS
1979 • 2009



#176, December, 2009
P.O. Box 1516, Lancaster, PA 17608
www.recordcollectors.org

"A non-profit organization dedicated to the promotion and advancement of music collecting"

KEY NOTES

PUBLISHED BY KEYSTONE RECORD

COLLECTORS, P.O. BOX 1516, LANCASTER, PA 17608

DECEMBER 2009
ISSUE #176

Inside...
♫ - A new show site!
♫ - Remembering Ruth
♫ - Don't forget to renew
♫ - We Need YOUR help



RAMBLINGS FROM THE EDITOR

It is appropriate to thank the 2009 Officer Team for their hard work. In a volunteer-run organization, it is not possible to accomplish the many things on our agenda, and organize a show every month without the continued efforts of many different people. So, whether it was a small one-time job, or a continued monthly commitment, thanks for another great year!

Thanks to Club Photographer **Ron Diehl** who read the request for help in the cyber newsletter and quickly responded at the November show. Ron will also be serving as our Membership Directory Coordinator - producing one each year for us. The one included in this mailing is a result of his efforts - thanks Ron!

Derek

B. Derek Shaw
KEY-NOTES Editor
& Communications



VIEW FROM THE TOP

A year has flown by again, we're into December already! Overall, it has been a pretty good year. I hope it has been for you too!

Included with this edition of **Key-Notes**, is the ballot for the election of the officers. The present officer team has agreed to take on the responsibilities for another year, however if you know of anyone who may want the job, feel free to write their name on the ballot.

Also an updated membership list is included with this mailing, thanks to KRC member **Ron Diehl**.

A tip of the hat to **Bob "Will" Williamson** who was able to secure our new location at the Ramada Inn on Greenfield Road in Lancaster. January 10th will be our first show there.

Dave Schmidt
2009 KRC President
NRCMusings@aol.com

A look at our new site...

ON THE ROAD AGAIN WITH KRC

A report by Show Coordinator Steve Yohe

Since the management of the German Trading Post has other plans for our meeting place for this past year, the December **Pennsylvania Music Expo** will be the last one for that venue. Fortunately, we've contracted for a place to move to for at least the first three months of 2010 (and very likely the whole year if all goes well). Thanks to the efforts of Site Coordinator **Bob (Will) Williams**, we will be moving to the Ramada Inn and Conference Center (formerly the Holiday Inn), 521 Greenfield Road, Lancaster PA 17601, starting with the January 10, 2010 show. It's located just off US30 - Greenfield Road exit - next to the Pennsylvania Dutch Country Welcome Center (20 minutes south of our current site.)

- We will now be located 2.1 miles east of the US222/US30 junction, not too far from our former location at Lancaster Catholic High School.

- We will be using all four sections of the Ramada's Ballroom, a long narrow room which will accommodate all of our regular vendors. Those vendors who come occasionally or those who book late will be fit into the main room or in the hallway adjoining the room as space permits, so it's even more critical than before that *vendors plan ahead, book as soon as possible, and pay in advance.*

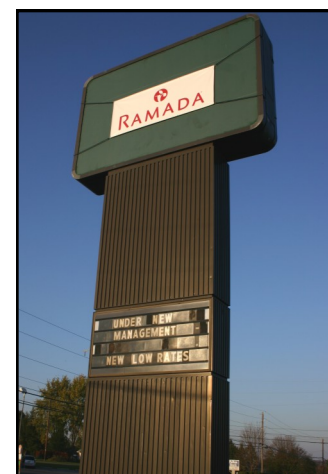
- Double doors for loading/unloading enter directly into the hallway adjoining the Ballroom. These doors are located on the right side of the building, just beyond the dumpsters.

- The public will enter through the main lobby area going past the reservation desk and then a quick right into the hall adjoining the Ballroom, using any of the four entrances into the show room.

- A restaurant off the main lobby will be open for carryout food. There is also a McDonald's directly across from the hotel and a Subway just down the road.

- Parking is adequate for all.

- Table rents remain \$35 per 6' table and \$45 per 8' wall-space table - subject to availability.



KRC in 2010

EACH SHOW 9 AM TO 3 PM SECOND SUNDAY OF EVERY MONTH
RAMADA INN & CONFERENCE CENTER BALLROOM
 FLYERS ARE AVAILABLE, SO TAKE SOME AND SPREAD THE WORD!
 ANNOUNCEMENTS ARE AVAILABLE FOR WANT LIST ITEMS.
 BUSINESS MEETING FOLLOWS EVERY OTHER SHOW AT 3:30PM,
 (DURING THE MONTH THERE IS NO **KEY-NOTES**) PLAN TO BE THERE.

WE NEED YOUR HELP!

ON-GOING ASSISTANCE NEEDED...As you are well aware, the club operates on a shoe-string with the generous help of volunteers who all help to keep the show going. There are two activities that we are in need of volunteers stepping up to the plate to offer help.

WEBSITE LINKS COORDINATOR: As you are probably painfully aware, the links section of our website is very stale and near dormant, with many links not even functioning anymore. During **Bill Donohue's** tenure as President, he volunteered to go through all the existing links, arrange them by category and secure a logo or some type of graphic for each site. He also said he would sift through the ones featured in each issue of KEY-NOTES, cyber edition. However that never occurred.

Current President **Dave Schmidt** assigned himself that task and again, unfortunately, hasn't occurred. So if there's a member who enjoys visiting various music-related web-sites and wants to take on this task, please contact me (**Derek Shaw**) at bdshaw@lunginfo.org or 717-843-3050. I will then give you the capsule summaries of all the links we have listed in the first 104 issues of the cyber newsletter. There are quite a few, but some are dead, others now charge a fee and a few others are not relevant anymore.

INTERNET CALENDAR/SOCIAL MARKETING COORDINATOR: Publicity of our shows and special guests is important to get to the media. Your editor has been handling communications responsibilities to 130 radio, TV and print publications in a 7 PA county and 3 MD county area for many, many years. In addition, I've been attempting (when I can) to promote our show via non traditional methods. This includes radio, TV and print internet calendars. I have put together over 30 additional outlets so far. This also includes music and CD/record show publications, Craig's List and other methods. We have not BUT SHOULD utilize: Facebook, Twitter, Linked In, etc. If interested, contact me (**Derek Shaw**) at bdshaw@lunginfo.org or 717-843-3050. I will gladly help get you started on this vital, on-going, show marketing project.

BOTH POSITIONS do not require your attendance at every show, however they do require computer/internet navigation proficiency.



Issue #176 December 2009

EDITOR, GRAPHICS and LAYOUT: **B. Derek Shaw**
 CONTRIBUTORS: **Doug Smith, Dave Schmidt, Tom Grosh, Steve Yohe, Dennis Emerick, Phil Schwartz.**
 PHOTOS: **B. Derek Shaw, Phil Schwartz, Bob "Will" Williams,**
 Ramada Inn and Conference Center.
 CHANGE OF ADDRESS: P.O. Box 1516, Lancaster, PA 17608
 NEWS/PHOTOS/IDEAS: 329 Rathton Rd., York, PA 17403-3933
bdshaw@lunginfo.org
 (Deadline for #177 is January 10th)
 Names in **bold** type are members of Keystone Record Collectors



(717) 898-1246
 CALL ANYTIME!



KRC MEMBERSHIPS MAKE GREAT CHRISTMAS GIFTS

Buying a club membership for the music collector spouse, cousin, uncle, grandparent, co-worker or friend makes an excellent stocking stuffer gift for the holidays. For a nominal \$15 a year, someone you know can enjoy (or continue to enjoy) a membership in one of the world's largest organizations for music collectors. Membership provides six issues of the **KEY-NOTES**, the official club newsletter, 12 issues of **KEY-NOTES** update, a monthly cyberspace update and show reminder via e-mail, and **Recollections Magazine** (2010 plans include an edition). This is in addition to discounts on price guides, chart information books and special music and book offers that appear in **KEY-NOTES** from time to time. Members who attend the show can enjoy member prices on record sleeves and other hobby supplies along with complimentary copies of Goldmine music publication (when available.)

Selected music retailers in South Central Pennsylvania offer a cash register discount to card holding KRC members (an up-to-date list of participating retailers is available from Club Secretary, **Erna Reinhart**). If that's not enough, some record/CD shows throughout the Mid-Atlantic region offer discounts to attend their show with a current KRC membership card. What are you waiting for? Sign up your entire neighborhood today! Gift memberships may be obtained by contacting: **Erna Reinhart**, 1616 Robert Road, Lancaster, PA 17601, or call: 717-314-5009 or e-mail: beatlechas@comcast.net

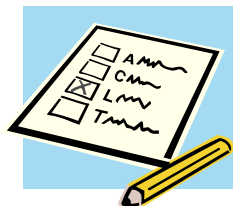
DON'T LOSE IT THIS YEAR!

Your 2010 KRC membership renewal notice is included in this issue of **KEY-NOTES**. It should be returned quickly so it doesn't get mixed in with monthly and holiday bills. By renewing your membership early, you will be assured of a listing in the 2010 Membership Directory. You also won't miss out on any special offers that appear in many issues of **KEY-NOTES**.



YOUR VOTE COUNTS

Also included in this issue is a ballot for selecting your 2010 club officer team. To vote, you must be a member for the upcoming year. Please fill out the top part of the form first (Renewal Application), then complete your ballot. Time flies, so don't procrastinate.



REMEMBERING RUTH FAUS by Phil Schwartz

March 9, 1927 - October 3, 2009

I can remember approaching a home early in the morning somewhere in the early 80s during a community yard sale. The neighborhood looked like it might be a fertile ground for records, and I had gotten there in the first 15 minutes of the sale. "Do You Have Any Records?" was my greeting. The woman in charge smiled and said "We had a big box of 45s....but a lady with a German accent just bought them all."

In fact, Ruth was born in Tallinn, Estonia, and moved to Germany, near Dreden, to flee the Communist occupation in 1941. It was on the train that the Communists confiscated her first collection: her stamps. During the war, she had to flee again to West Germany, securing a spot on the last bus to leave. She never saw her mother or brother, who remained behind, again.

Ruth married an American Soldier, and moved to The United States, in 1954.

In the 1970s, Ruth responded to an ad by Bruce Yeks, Editor of Stereo Review. She sold him a number of jazz albums which she bought at a thrift store in downtown Lancaster. The profit from this sale was substantial, and inspired her to buy more records, and learn the hobby.

In 1978, Ruth opened her legendary basement record business at 237 Coral Street. Most of us who were around KRC in the early years made frequent visits there. It was truly remarkable how well she learned the hobby, and how good her instincts were to buy the right merchandise.

There were virtually no flea markets or antique malls in Central Pennsylvania where Ruth was not a frequent visitor. This too is surprising, since Ruth did not own a drivers' license or a car. Her driver, Joe Closinski, made sure she showed up early and always helped to load and unload the records. Joe passed away in the 90s at age 94.

Ruth was one of the most popular dealers in the history of KRC, seldom missing a show at Columbia, Blue Ball, and Lancaster Catholic High, until she was afflicted by a Parkinson's - like syndrome. Ruth's daughter preceded her in death. Her son Carmino, who helped oversee the stand, in the Columbia days, now lives in the Kennett Square area. He would like our members to know how much KRC meant to his mom, and how much she enjoyed the camaraderie, and friendships she developed during her years as a stand holder.

Going to Ruth's house to buy vinyl (at the time) was always a treasure trove for me. She, with her driver, would travel five days a week in all directions, looking for quality goods for her basement "showroom" and KRC table.

Ruth had her own dry wit that made the visit even more special. If you didn't find much in one box, she would direct your attention to another and another, until you "hit the jackpot!" She was as unique as the KRC is. A real gem that will be deeply missed.

- B. Derek Shaw



I remember doing business with Ruth almost every Wednesday and Sunday—since she combed the whole county and I guess I should say many counties from garage sales to yard sales to private sales. She was a wonderful person to do business with and got to know her son as well over the years. She will be sadly missed by many people and lots of KRC members!!!

-Thomas Grosh

I met Ruth through her son Carmino, when he worked with me at JC Penney's restaurant back in 1972. At the time they lived in the 200 block of N. Lime Street in Lancaster, selling records from her apartment. When she moved to Coral Street (late 70's/early 80's), I started going to her house to buy records between the shows at Columbia. I always found good bargains at her stand—she always had what I had been looking for. I will miss her.

- Dennis Emerick

The reasons I sought out KRC in the first place were twofold: A) by the late eighties, the vehicle for which I had gotten recorded music since I was a kid—namely, vinyl—was disappearing; and B) the only option to continue to acquire newly-issued recordings was to change to the new technology. This left a bitter taste for a while.

My main focus in my early time with KRC was finding records; some which I had never been able to find, others that I became aware of by looking extensively. Given this shopping mindset, Ruth's table was a natural magnet. She always had good inventory at good prices. Ruth was always pleasant, garrulous, helpful in pointing out titles, and had this marvelous irreverent wit about her.

Invariably, for years, I never got away from her table without a purchase of some kind.

It was kind of sad when she was no longer a regular participant dealer, towards the back of the Catholic cafeteria. I have fond memories of Ruth and a fair amount of records that were purchased from her.

- Doug Smith