

# A LOOK AT OUR NEW SHOW LOCATION



# HAPPY HOLIDAYS FROM YOUR 2007 OFFICER TEAM!



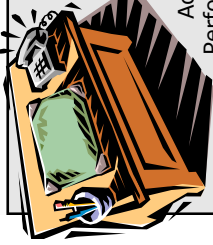
#164, December 2007  
P.O. Box 1516, Lancaster, PA 17608  
[www.recordcollectors.org](http://www.recordcollectors.org)

# KEYNOTES

PUBLISHED BY KEYSTONE RECORD

COLLECTORS, P.O. BOX 1516, LANCASTER, PA 17608

DECEMBER 2007  
ISSUE #164  
*Inside...*  
♫ - Lots of Help  
♫ - 50+ year old contest  
♫ - Show Scenes  
♫ - New stuff



## RAMBLINGS FROM THE EDITOR

The 650+ people in attendance at the November 3<sup>rd</sup> concert at the Whitaker Center in Harrisburg were part of a local historical event. This was the annual "Class Act featuring Rita" concert in the Sunoco Performance Theater; however the 2007 edition was different. Previously Dave Bupp and Buddy King, the lead singers of the mid 1960's blue-eyed soul band, the Magnificent Men joined with the band to perform a few selections. (Class Act is comprised of two original "Mag Men" - drummer and band leader Bob Angelucci and bassist Jim Seville.)

What made this outing special was the reunion of the other three members, Terry Crouser, Tom Pane and Billy Richter. All seven had not played together on the same stage since 1970! They made it seem like no time had passed at all when the septuplet performed "Piece of Mind" and "Stormy Weather".

It is fitting to send a sincere "thank you" to the 2007 Officer Team for their hard work. In a completely volunteer-run organization, it is not possible to accomplish the many things on our agenda and organize a show every month without the ongoing efforts of **many different people**. 2007 was especially tough with a seamless move between the September and October shows. So, whether it was a small one-time job, or a continued monthly commitment, thanks for another great year!

There are so many people who do many things - BIG and small for the club - many times unnoticed, however these two items deserve mentioning. President **Bill Donohue** and wife **Ruth**, volunteered an ENTIRE Saturday before the November show to help the Pennsylvania Jaycees put the fresh coat of light blue paint on the walls of our new show site. It really looks much better. Thanks to **Ben Barber** with WHYL radio in Carlisle. While many radio and TV stations and newspapers give us a plug or mention, **Ben** continues to go above and beyond with two minute Public Service announcements about our show each and every month. (They norm in the industry is 30 seconds and occasionally 60 - this is unheard of AND appreciated.) Thanks to **Les Knier** who contributed the expense of getting our 2007 Membership Directory printed. Finally, **Dave Schmidt** is garnering internet radio Calendar of Event mentions about our monthly shows throughout the country.

Recently, I heard of someone who travels to Philadelphia from Lancaster every day via Amtrack. (Can't recall the name). She mentioned the show to fellow commuters in conversation and now they all seem interested in attending. Again it's the small things that add up. We encourage you to do your part and let us know, so we can let the rest of the membership know.

The November show was again busy at our new location. There were lots of new buyers and familiar faces as well. It was crowded MOST of the day! That show also featured the semi annual visit by the American Historic Jukebox Society, a great group of folks. They raffled off their fundraiser jukebox at our show, the culmination of ticket sales all year long. The AHJS has continued to support our efforts through their club members and activities. Expect to see them again with another great selection of jukeboxes at our April 13<sup>th</sup> show. Plan to be there!

*Musically Speaking,*

*Derek*

**B. Derek Shaw**  
KEY-NOTES Editor  
& Communications  
[bdshaw@lunginfo.org](mailto:bdshaw@lunginfo.org)



## VIEW FROM THE TOP

Our second month at our new home was a sell out - all tables were rented! I would like to say "Thank You" to the American Historic Jukebox Society for continuing to participate in the **Pennsylvania Music Expo**. We also appreciate them choosing our show as their annual jukebox raffle site. They have been selling tickets all year, with the winner from Massachusetts being selected on November 11<sup>th</sup>. We will be looking forward to having them at the April 13<sup>th</sup> show.

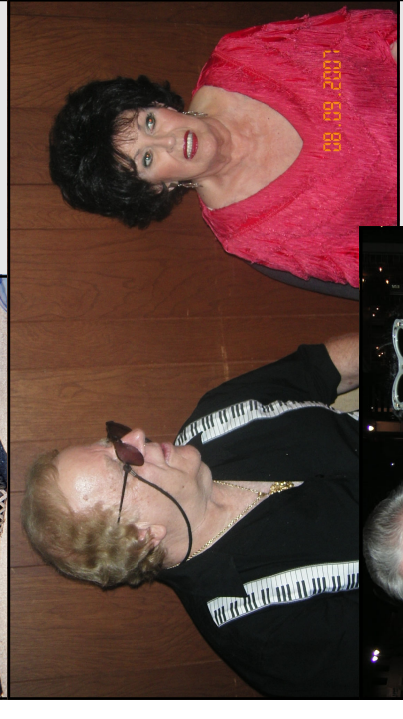
In this issue of **KEY-NOTES** #164, you will find your election ballot and membership renewal forms. Please fill them out - renew your membership and vote for your officers to run the club during the next year. As The President of The **Keystone Record Collectors** and on behalf of all your elected and appointed officers, we wish all club members a "Merry and Happy Holiday Season". Here's wishing you find the record of your dreams this year.

**Bill Donohue**  
2007 KRC President  
[discspinner45@comcast.net](mailto:discspinner45@comcast.net)  
P.S. This past August, my wife **Ruth** and myself attendee an annual rock-a-billy festival in Nashville. Here's a few photos from the festival. Expect to see a complete report in a future edition of **KEY-NOTES**



(to the left) The original Stan Perkins homestead.

Below: Local living legend Joey Wells with the Queen of Rock-a-billy, Wanda Jackson.



Left: Ace Cannon with KRC's First Lady, **Ruth Donohue**



### KRC in 2007

EACH SHOW 9 AM TO 3 PM SECOND SUNDAY OF EVERY MONTH  
**PENNSYLVANIA JAYCEES BINGO HALL**  
 FLYERS ARE AVAILABLE, SO TAKE SOME AND SPREAD THE WORD!  
 ANNOUNCEMENTS ARE AVAILABLE FOR WANT LIST ITEMS.  
 BUSINESS MEETING FOLLOWS EVERY OTHER SHOW AT 3:30PM,  
 (DURING THE MONTH THERE IS NO **KEY-NOTES**) PLAN TO BE THERE.

## FOND FAREWELL



Sadly on September 2nd, the club lost member Ann Herman, of West End Avenue, Lancaster.

Ann enjoyed traveling, especially going to Scotland. She most recently managed The Tigers Eye Boutique in Litzitz and was an avid antiques dealer at the shops at Renninger's. She loved going to the Theater in New York City and the Fulton Opera House. Her favorite hobby was going to yard sales, and caring for her cats, Lovejoy and Kaley.

KRC members will mostly know her as a long time helper for Very English and Rolling Stone (**Tom Grosh**) at the Pennsylvania Music Expo.

Ann will be missed by many friends, family and the KRC.

## A NEW MAGAZINE AND A NEW SIGN

Two new things were unveiled at our November 11<sup>th</sup> **Pennsylvania Music Expo**. First, after a year in the making, our new publication, **Re-Collections** debuted to critical acclaim. The name was a suggestion by long time member **Cheryl Tassanari**. For her efforts, **Cheryl** will receive a complimentary 2008 membership in the Keystone Record Collectors. Good work!

Installed a few days before the November show, our new two sided 3' x 8' sign now stands beside PA 23. PennDOT tells us that over 20,000 cars pass by that location, in either direction, each weekday! That's a lot of potential new customers and members for the club. Expect increased show traffic.



## KEY-NOTES

Issue #164 December, 2007

EDITOR, GRAPHICS and LAYOUT: **B. Derek Shaw**  
 CONSULTANT: Scott Shermeyer

CONTRIBUTORS: **B. Derek Shaw**  
**Doug Smith, Bill Donohue, Wikipedia**

PHOTOS: **B. Derek Shaw, Bill Donohue**

CHANGE OF ADDRESS: P.O. Box 1516, Lancaster, PA 17608  
 NEWS/PHOTOS/IDEAS: 329 Rathton Rd., York, PA 17403-3933  
[bdshaw@lunginfo.org](mailto:bdshaw@lunginfo.org)

(Deadline for #165 is January 13<sup>th</sup>)

Names in **bold** type are members of Keystone Record Collectors



### KRC INFO LINE

(717) 898-1246  
 CALL ANYTIME!



## KRC MEMBERSHIPS MAKE GREAT CHRISTMAS GIFTS

Buying a club membership for the music collector spouse, cousin, uncle, grandparent, co-worker or friend makes an excellent stocking stuffer gift for the holidays. For a nominal \$15 a year, someone you know can enjoy (or continue to enjoy) a membership in one of the world's largest organizations for music collectors. Membership provides six issues of the **KEY-NOTES**, the official club newsletter, 12 issues of **KEY-NOTES** update, a monthly cyberspace update and show reminder via e-mail, and **Recollections Magazine** (2008 plans include an edition or two). This is in addition to discounts on price guides, chart information books and special music and book offers that appear in **KEY-NOTES** from time to time. Members who attend the show can enjoy member prices on record sleeves and other hobby supplies along with complimentary copies of Goldmine music publication (when available.)

Selected music retailers in South Central Pennsylvania offer a cash register discount to card holding KRC members (an up-to-date list of participating retailers is available from Club Secretary, **Erna Reinhart**). If that's not enough, some record/CD shows throughout the Mid-Atlantic region offer discounts to attend their show with a current KRC membership card. What are you waiting for? Sign up your entire neighborhood today! Gift memberships may be obtained by contacting: **Erna Reinhart**, 1616 Robert Road, Lancaster, PA 17601, or call: 717-299-4935 or e-mail: [beatlechas@comcast.net](mailto:beatlechas@comcast.net)

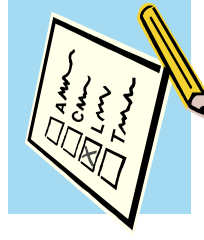
## DON'T LOSE IT THIS YEAR!

Your 2008 KRC membership renewal notice is included in this issue of **KEY-NOTES**. It should be returned quickly so it doesn't get mixed in with monthly and holiday bills. By renewing your membership early, you will be assured of a listing in the 2008 Membership Directory. You also won't miss out on any special offers that appear in many issues of **KEY-NOTES**.



## YOUR VOTE MATTERS

Also included in this issue is a ballot for selecting your 2008 club officer team. To vote, you must be a member for the upcoming year. Please fill out the top part of the form first (Renewal Application), then complete your ballot. Time flies, so don't procrastinate.



## Musings from the Table Reservationist

By Doug Smith

After more than 12 years at Lancaster Catholic High School, KRC was forced to find a new home (one last time, kudos to those involved with the thankless task of the dirty work to get that accomplished). The club and its patrons have started to get experience with the new venue, the Pennsylvania Jaycees Bingo Hall.

While the new building is not perfect (what place could be?), it is completely adequate for the club's purpose. And we still have our on-site caterer for everyone's convenience to get some sustenance without having to leave the premises.

Now about experience at the new facility, that is where I come in, for the purpose of this article. It wasn't the case the first month in October; but certainly was in November and is shaping up to be so in December: namely, the tables were sold out more than a week in advance!

This situation is much like the halcyon days of Columbia; where seller waiting lists were fairly common, as I understand it. Whether dealer waiting lists now becomes the norm or the exception remains to be seen. If it is the former, then vendors who have become accustomed to waiting until the last week, (let alone minute), to reserve tables will have to seriously consider changing their thinking of such.

**Let's face it:** our new home is not as large with smaller tables than the previous one. So selling out tables is more likely just because of that. Booking remaining tables might become instead of phone reservations a race of checks to the P.O. box. At the recent Trevoze (Philadelphia) record show, a couple of dealers wanted to pay cash to me directly to reserve spots at the December show. I declined to accept; telling them instead to get their checks in the mail the next day. I am loathe to take money for table reservations - *that is not my function*.

To sum up, I think tables selling out may not completely become the norm, however it will be much more common than it ever was at Lancaster Catholic. So dealers, get those checks in the mail quickly. Better yet, sign up for the next month at the current month's show. Remember, you can cancel up to 72 hours before the show and be carried over to the next one.

Of course, any show that sells out early pretty much puts me out of a job for that month.



## NEW YEAR, NEW VENDOR

Bags Unlimited based out of Rochester, NY recently became members of the KRC. They are a collection production supply company providing a wide variety of items, including ones for music collectors. They will be setting up at some of our shows in 2008, offering a discount to current club members. Yet another benefit of having KRC club membership! (You can visit them at: [www.bagsunlimited.com](http://www.bagsunlimited.com) or call: 800-767-BAGS.)



## Eurovision SONG CONTEST

Most Americans have no idea this song contest among nations has been going on for over 50 years, let alone that the hard rock band Lordi scored Finland's first and only win in all those years in 2006.

This annual competition is held among member countries of an organization known as the European Broadcasting Union (EBU).

Each member country is welcome to submit a song to be performed live on television. Ballots are then cast for the other countries' songs to determine the most popular song in the competition. Participating countries are not allowed to vote for their own entries.

The broadcast is one of the most-watched, non-sporting events in the world. The Eurovision Song Contest is known for often showcasing formulaic, orchestrated pop music. However, it has featured a vast, diverse array of songs, including such musical genres as Arab, Armenian, Balkan, Breton, Celtic, Dance, Folk, Greek, Israeli, Latin, Nordic, Pop-rap, Rock and Turkish.



The most notable winning Eurovision artists whose career was directly launched into the spotlight following their win were ABBA, who won the Contest for Sweden in 1974 with their song "Waterloo". ABBA went on to be one of the most successful bands of their time.

Another notable winner who subsequently achieved international fame and success was Céline Dion, who won the Contest for Switzerland in 1988 with the song "Ne Partez Pas Sans Moi".

Other artists who achieved varying degrees of success after winning the Contest include: Lulu (Boom Boom Bang-a-Bang, United Kingdom 1969), Brotherhood of Man (Save Your Kisses for Me, United Kingdom 1976) and Johnny Logan (who won twice for Ireland; with What's Another Year? in 1980, and Hold Me Now in 1987).

Many other winners include well-known artists who won the Contest mid-career, after they had already established themselves. Some artists, however, have vanished into relative obscurity, making little or no impact on the international music scene since their win.

**You Never Know:** What you will find in a grocery store in Tampere, Finland. This is a label for a two liter bottle of soda. Lordi is a heavy metal band that won the 2006 Eurovision Song Contest. Members of Lordi are noted for their elaborate monster-like costumes depicted during live shows and in music videos.