

A PHOTO ESSAY All images courtesy B. Derek Shaw



KEYSTONE RECORD COLLECTORS

KEY NOTES logo

#168, August 2008
P.O. Box 1516, Lancaster, PA 17608
www.recordcollectors.org

KEY NOTES

PUBLISHED BY KEYSTONE RECORD

COLLECTORS, P.O. BOX 1516, LANCASTER, PA 17608

AUGUST 2008

ISSUE #168

Inside...

- The "Oaks" Reunion
- Rock and Rides
- KRC "On-the-Road"
- Local Celebs



RAMBLINGS FROM THE EDITOR

Recently the semi-annual club media e-mail was sent to 130 radio/TV/print publications. This semi-annual communication continues to generate additional coverage of our club and show. The mailing announced show dates for the second half of the year; print calendar information along with Public Service Announcements for the electronic media telling about our monthly musical treasure trove. We also encouraged media to attend and cover the event for their readers/listeners/viewers.

Looking Ahead: The next issue of KEY-NOTES will contain the annual Joel Whitburn/Record Research book offer - a very popular promotion with club members. You've been warned - start saving your money!

As we move into the last half of 2008, we rely on ALL MEMBERS to promote OUR show. Recruit new members; encourage past members to re-join; forward the monthly e-mail notice (if you get it) to other music collectors; put flyers in your favorite music store or one in mail-order packages if you are a vendor; mention us on your web site (provide a link) or place show flyers in your neighborhood high-traffic retail areas. Help us - help ourselves!

Musically Speaking,

Derek

B. Derek Shaw
KEY-NOTES Editor
& Communications
bdshaw@lunginfo.org

LOOKING BACK - OUR JUNE SHOW

The club strives to offer unique and different music-related activities, from time to time, to attract an audience that may not have known about us or have not visited in quite some time.

Such was the case in June when members of Rick & the Rivals got together and performed acoustically. This was the first time this 1960's and early '70's band from Pequa, Lancaster County, got back together. The group, comprised of Rick Grabowski, his brothers and a few others, drew a decent crowd of friends, family and fans who came to reminisce.

The group was kind enough to donate two copies of their 45 single that were raffled, providing additional revenue for our club.



VIEW FROM THE TOP



Welcome to the August issue of Key-Notes. Summer is coming to a close and I hope you have found the time to go out and find some good music. Just remember that we are here every month as always.

Earlier this month, the American Music Theater held their Summer DOO WOP Cavalcade. Look for a review of the show in the next Key-Notes and on-line on our web site.

As a reminder to dealers, make your reservations early - the shows have been selling out and September is always a good month. Also in October Steve Yohe will be away so make your decisions now so there will be no disappointments later.

Keep the music playing!

Bill Donohue
2008 KRC President
discspinner45@comcast.net

As a side note, KRC member Dave Shayer paid a visit to the studios of WLAN-AM in 1962 and picked up a copy of their record survey of the week. Listed on it was the winner of a contest the station was running called "Tumble Tunes". The winner? Rick Grabowski! Dave gave Rick a copy of the survey while Rick and his band were at the KRC show in June! Talk about a memory jolt!

New Dimension Radio WLAN-AM 1390 SWINGIN' 60 SURVEY FUTURE 60

TUMBLE TUNES ANSWER: DefDesf Desafada Bosa Nova Rick Grabowski Kinzers, Penna.

**KRC in 2008**

EACH SHOW 9 AM TO 3 PM SECOND SUNDAY OF EVERY MONTH

**PENNSYLVANIA JAYCEES BINGO HALL**

FLYERS ARE AVAILABLE, SO TAKE SOME AND SPREAD THE WORD!  
ANNOUNCEMENTS ARE AVAILABLE FOR WANT LIST ITEMS.  
BUSINESS MEETING FOLLOWS EVERY OTHER SHOW AT 3:30PM,  
(DURING THE MONTH THERE IS NO **KEY-NOTES**) PLAN TO BE THERE.

**KRC INFO LINE**

(717) 898-1246  
CALL ANYTIME!

**WE'RE INVITED**

York City Recreation & Parks has extended an invitation to KRC members to "go on-the-road" and participate in their "Great Balls of Fire Car and Truck Cruise In!". The event takes place Saturday, September 27<sup>th</sup> on South Vander Avenue near the Penn State York Campus.

Here's the details...

- \* Set up takes place between 7am and noon. The event runs Noon - 4pm.
- \* Our club will have use of one entire pavilion with 20+ six foot tables.
- \* Cost per table \$5 plus additional donations are encouraged from participating KRC vendors.
- \* Merchandise is music and memorabilia from 1982 and earlier (to coincide with the cars on display.)  
NOTE: This is NOT a music show.

**To participate:** Send B. Derek Shaw an e-mail at: [bdshaw@lunginfo.org](mailto:bdshaw@lunginfo.org) Indicate one or two tables. Initially participating members will have one table. Should additional tables become available, those requesting a second one will be notified. Participation is on a first come, first serve basis. You must pre-registered. No day of drop-ins.

This is a great opportunity to have fun, move some music and memorabilia and get the word out about the **Keystone Record Collectors** AND the **Pennsylvania Music Expo**. Yet another benefit of club membership!

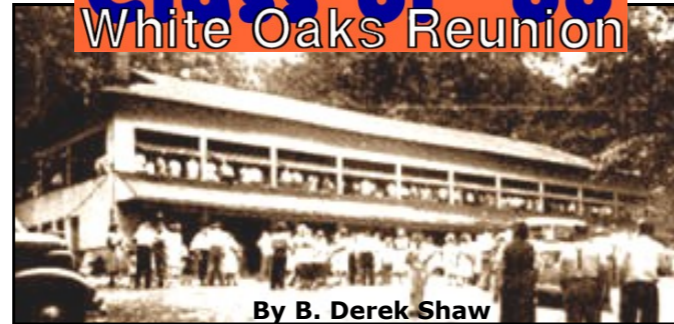
**KEY NOTES**

Issue #168 August 2008

EDITOR, GRAPHICS and LAYOUT: **B. Derek Shaw**CONTRIBUTORS: **Doug Smith, B. Derek Shaw,****Bill Donohue, Dave Shayer**PHOTOS: **B. Derek Shaw, Google Images, Steve Yohe**

CHANGE OF ADDRESS: P.O. Box 1516, Lancaster, PA 17608

NEWS/PHOTOS/IDEAS: 329 Rathton Rd., York, PA 17403-3933

[bdshaw@lunginfo.org](mailto:bdshaw@lunginfo.org)**(Deadline for #169 is September 14<sup>th</sup>)**Names in **bold** type are members of Keystone Record Collectors**Class of '66  
White Oaks Reunion**

It was THE place to hear live music between 1960 and 1969. It was supported by teens from EVERY high school in York County and beyond. It was located off George Street Extended in North York on a site now occupied by All Seasons Storage. (Parking and the ball fields are now part of Interstate 83.) It was White Oaks Park.

All the top bands from throughout Central Pennsylvania played there either as house bands or periodically throughout the year. They included: The Del Chords, The Tranells, El Dantes, The Exciting Invictas, The Crystalaires, The Endells, The Ambassadors, Seven Dwarfs, The Emperors, The Chateaus, The Magic Monorays, The Thundering Sentries and many, many more.

The photo above is from a late 1940's company outing for the Naval Ordnance Plant. Organizers are still looking for a 1960's era photo. Should anyone have one, please contact KEY-NOTES editor Derek Shaw.

On Saturday, October 18th, Sovereign Bank Stadium in downtown York will be filled with those who attended dances at the "Oaks" and those who wished they had. It will be an opportunity to reminisce with old friends and meet new ones as well. York's own Del-Chords will be there and possibly the Ambassadors from Lancaster. Other groups, TBA.

Additional activities are scheduled that day including a vintage sports car display in the front parking lot, a video presentation that will be shown throughout the stadium and the release that evening of a limited edition two CD set of *White Oaks - The Battle of the Bands*, produced by KRC's own **Phil Schwartz**.

Admission that night is \$10. Greg Guillen, a member of the Reunion Committee will have tickets at our show, the next three months for only \$5.00!!



For more information, please visit:  
<http://www.yorkclassof66.com/>

**ROCK AND RIDE: Hard Rock Park**

A travel report by Doug Smith

"...been a long time since rock and roll..."  
-Led Zeppelin

I have never quite understood what that means. For me, it had not been a long time-since being in Myrtle Beach. Two summers ago, it was; when the downtown Pavilion Amusement Park was in its last operating season.

So now, in 2008, I returned to MB. Pavilion Park is gone (some remnants were actually saved and relocated to a shopping mall). In its stead, Hard Rock has opened its first theme park. This is a travel report from a visit in June.

Upon approaching the gate, I was having a hard time believing I was hearing Black Sabbath at a park. Then-getting a grip-remember, it is 'hard rock'. With that re-focus, it was on to the flagship of the park: *Led Zeppelin, The Ride*. The large loading area of this roller coaster is set up to be like a dirigible. One of the stipulations of Messrs. Page, Plant, and Jones to license their music for the ride -"Whole Lotta Love"- was that the entire song had to be played per ride cycle. So some of it is heard in the pre-show loading area and the rest during the ride itself. This will certainly enhance the overall Zep experience but does nothing to speed up repeat rides.



Zep the Ride is a metal looping coaster painted bright white and blue; quite the contrast above the green lake it surrounds. The hue of the lake is most like, well, that of algae. The rest of "Whole Lotta Love" blares at you from Bose speakers at

your feet. Yes, LZ the Ride is quite an electrifying experience. A member of the roller coaster group summed it up thusly: this is a ride for aging baby boomers who love Zeppelin but don't get to too many parks or on too many coasters.



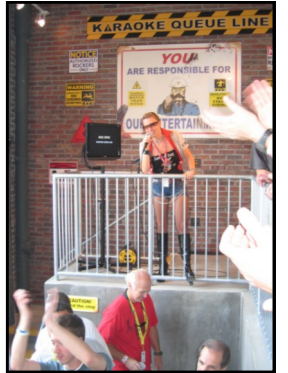
Quite a contrast from that is the Moody Blues dark ride based on "Nights in White Satin". Two thoughts on dark rides in the 21<sup>st</sup> century: 1)they no longer have to be scary; and 2) with existing technology, there is no reason for them not to be an excellent audiovisual adventure. "Nights in White Satin"

was a perfectly logical choice upon which to base a dark ride. The music has been re-recorded for the ride; and the ride certainly does deliver; including one wondering how fast or slow the tram can travel within about 20 feet.



Then there is *Maximum RPM*, a convertible sports-car (extended Mini Coopers) coaster that takes drivers on a test track. Its odd feature is a Ferris-wheel device that gets the cars lined up for their launch.

This could prove to be the most vexing ride in the park. It seems that Ferris wheel could have more than its share of maintenance problems. The ride itself is also rather short. This ride could have chronic long lines. Even karaoke set up within the queue area can provide only a certain amount of relief for a long wait. Someone mentioned that the exterior motif is supposed to resemble a Pink Floyd album cover. No album that I could place, however. (*Animals*, perhaps? - Editor)



Another ride in the park, much more low tech compared to the aforementioned, is a mine train ride based on the Eagles' "Life in the Fast Lane". (Editor's Note: The Eagles re-recorded the song to follow the flow of the ride.) There are other attractions a visitor would expect: some smaller rides, dining establishments (alcohol available in a few), places to load up on Hard Rock gear, plenty of free shows. There is room for expansion. The attractions that are there are presented extremely well. More attractions added up to those standards will make the park that much better. It is not cheap to enter; but HRP is open 15 hours daily, until 1 AM.

A photo op lets you, in your own style, cross Abbey Road in lieu of the Beatles. And there is also the (not yet open during my visit) "Phonehenge", with the iconic British red booths in place of any rocks.



So if your vacation plans are for Myrtle Beach; definitely consider a break from the surf and golf for a day at Hard Rock Park.

And it will be virtually *no time since rock and roll*.

